



Wallingford

4315 Thackeray PI NE - Seattle 98105

Sitting in Wallingford - one of Seattle's iconic neighborhoods - and located mere blocks from the shops, restaurants, and parks that make this vibrant community a favorite, three brand new homes await. Built by local homebuilder, Insignia Construction, natural light pours in through floor to ceiling windows, where you'll enjoy open concept living spaces and contemporary finishes. Each home features a generous rooftop terrace where you can watch seaplanes descend towards Lake Union while you take in stunning views of downtown. With dedicated off-street parking or an attached garage, bonus/flex space, ample storage and private outdoor amenities, plus sitting blocks from Gas Works Park and the Burke-Gilman Trail, everything you need is here!

Offered at
\$1,650,000



Larry Wilczynski | 206.331.3960

Dan Wilczynski | 206.331.3960

WilczynskiPartners.com

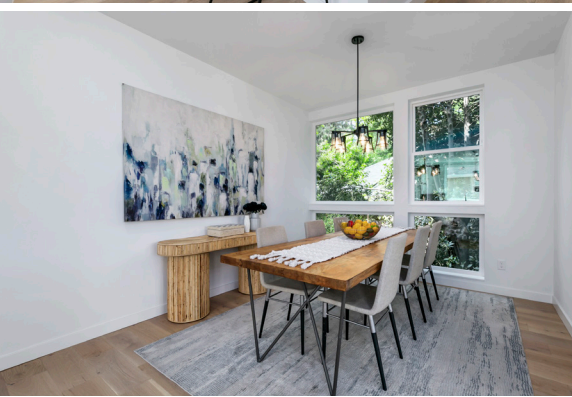


WILCZYNSKI
PARTNERS



Home Features

- 4 bedrooms
- 3.5 bathrooms
- 2,329 sf (plans)
- Attached garage
- Built 2023
- High-efficiency heat & A/C
- Gas fireplace
- Tankless hot water
- Rooftop deck with views of downtown and Lake Union



Points of Interest

- Dick's - 0.2 mi
- QFC - 0.6 mi
- Irwin's Bakery - 0.6 mi
- Grand Central Bakery - 0.7 mi
- Gas Works Park - 1.0 mi
- Cantinetta - 1.0 mi
- University of WA - 1.2 mi
- Woodland Park - 1.6 mi
- PCC Markets - 1.7 mi



WILCYNSKI
PARTNERS

Windermere Midtown